



# On The Lake

## NEWSLETTER

LAKE MINNETONKA ASSOCIATION • *The VOICE for Lake Minnetonka Lakeshore Owners and Businesses*

### Our Mission

The Lake Minnetonka Association, a nonprofit organization, works to promote the preservation, protection, and the reasonable use of Lake Minnetonka through volunteers, lakeshore owners, and businesses. The Lake Minnetonka Association serves as an information resource and advocate for the Lake Minnetonka community.

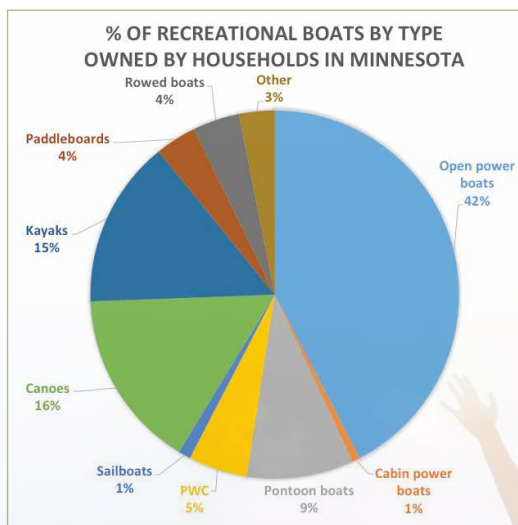


## More People are Discovering the Fun of Boating

If you think there are more boats on Lake Minnetonka you may be right. According to the National Marine Manufacturers Association, 2020 was the best year for boat sales since the mid 2000's. Nationally, sales of new powerboats increased last year by an estimated 12% compared to 2019, and industry experts expect this trend to continue in 2021.

Whether it is pent up pandemic stress, the economy, or a change in recreational trends, more people seem to be spending time on the water and discovering the fun of boating. Due to growing popularity of watersports, boats in all classes are selling fast. Local retailers also say the demand for outboard motors is likewise high.

Lake Minnetonka will always be home to large cruisers, but the most popular boats currently being sold across the U.S. and in Minnesota are smaller, more versatile boats generally less than 26 feet in length. This is echoed in a recently released United States Coast Guard (USCG) survey that found the largest percentage of watercraft in Minnesota are open power boats (e.g. bass boats,



Source: USCG

ski boats) with canoes and kayaks making up the second largest number of watercraft in the state.

Also, according to the USCG survey, if you own a power boat – you are likely to spend more time on the water with your family. The survey showed Minnesotans with motorized boats used them an average of 72 days per year as compared to non-motorized boats

that were taken out an average of 39 days; the average trip of a motorized boat user was 3.6 hours as compared to 2.7 hours for human powered watercraft; and 88% of power boaters had someone under the age of 12 with them.

The Lake Minnetonka Association wants Lake Minnetonka to remain open to all boaters and reminds everyone to be courteous of each other, keep the noise down, and bring back your litter. Boating is part of the character and legacy of Lake Minnetonka. We are proud to work with our members and partners to help make Lake Minnetonka a welcoming and enjoyable place, that provides and offers a diversity of boating and recreational experiences.

# From The Helm

By Tom Frahm, LMA Board President

## Help to Keep Lake Minnetonka Weed Free



Sometimes to get something done, you need to do it yourself. Such is the case when it comes to controlling aquatic invasive species (AIS) pollution on Lake Minnetonka.

We have had problems with AIS pollution on Lake Minnetonka for well over thirty years. Waiting for government to address this problem is pointless. While the Minnesota Department of Natural Resources provides some financial help to control these weeds, their funds are limited. The Minnehaha Creek Watershed District, which collects a significant part of its tax revenue from the Lake Minnetonka area, is unwilling to help Lake Minnetonka residents with this problem.

Since Eurasian watermilfoil was first found in Lake Minnetonka, lakeshore residents and local businesses have taken the lead in controlling it. Today, as new AIS pollution threatens the lake, we are urging all lakeshore residents and businesses to work together to help control this problem.

By working together to raise funds to treat AIS bay-wide, lakeshore residents on Grays, Gideons, North Arm, Phelps, Crystal, Carmans, St. Albans, Carsons and St. Louis bays have kept invasive Eurasian watermilfoil, curlyleaf pondweed, and other invasive weeds under control. Eventually, we would like all bays on Lake Minnetonka treated. To do this, it is important for lakeshore residents to understand the benefit of keeping their entire bay free of invasive weeds and join with their neighbors to have their entire bay treated for Eurasian watermilfoil and curlyleaf pondweed. Otherwise, some may feel "I don't have a problem in front of my house, so why should I get involved?" If that happens, AIS will continue to spread and parts of the lake may never be treated.

The real stewards of Lake Minnetonka are its residents. If we work together to fund and treat AIS bay-wide, we can eventually control AIS throughout all of Lake Minnetonka.

## Minnesota's 21-Day Dry Law

Any boat lift, dock, swim raft, or associated equipment that is removed from any lake or river needs to dry for 21 days before being put in a different lake or river. This only applies to docks, lifts, swim rafts, and other water-related equipment—not boats.

After a dock, lift or other water related equipment is decontaminated, it still needs to be out of the water for 21 days before putting it in another lake or river. Once dried for 21 days, all aquatic invasive species (AIS) like zebra mussels, must be removed before transporting it to another lake or river.

It is often difficult to do a thorough inspection of all the nooks and crannies where an AIS may be located, and it only takes a small fragment of an invasive plant or a single AIS to infest an entire lake. Avoid purchasing water related items that have been on lakes known to have AIS or which have not been completely inspected and allowed to dry for at least 21 days. This is of special concern when buying used water-related equipment online.

***The longer the dry time, the better!***



Photo: MNDNR

**CRUISING INTO 2021, AND...**  
**Life Is Still Better On The Lake!**

**Lake Minnetonka Public Cruise Schedule Through October 17th**

- **Sightseeing Cruises** – Mon, Wed, Fri: 11:30 am-1:00 pm, Saturdays & Sundays: 2:00-3:30 pm
- **Margarita Mondays, plus Taco Bar and Drink Specials** – Mondays: 6:00-8:00 pm
- **Happy Hour, Pizza & Cocktail Cruise (Incl. Pizza & Drink Specials!)** – Tuesdays: 6:00-8:00 pm
- **SUNDAYS: Delicious Brunch Buffet 11:00 am-1:00 pm | Sights & Bites Cruise 5:00 pm-7:00 pm**

**Children, Group & Senior Pricing • Lake Cruises depart from the Port of Excelsior • Reservations required**

**952.474.8058** TwinCitiesCruises.com

**\$2 Off Any Public Cruise!**  
Use Discount Code "LMA" Online!

**Paradise** CHARTER CRUISES

"On The Lake" is a publication of the Lake Minnetonka Association, P.O. Box 248, Excelsior, MN 55331  
**Issue 2021: 2 • April**

### How to Contact the LMA

Eric Evenson, Executive Director  
Phone: 952-470-4449  
E-Mail: [info@LMAssociation.org](mailto:info@LMAssociation.org)  
Website: [www.LMAssociation.org](http://www.LMAssociation.org)

### LMA BOARD MEMBERS

Tom Frahm, President (Crystal Bay)  
Rob Roy, Vice President (St. Albans Bay)  
Lee Harren, Treasurer/Secretary  
CPA/Retired (Stubbs Bay)  
Judd Brackett (Gideons Bay)  
Terry Bryce (Grays Bay)  
Rod Kern (Carsons Bay)  
Josh Leddy (Spring Park Bay)  
Amanda Walsh (West Arm Bay)  
Denise Westman (Echo Bay)





# Duck-Duck... **GOOSE**

In the wild, geese live in low marshes, river valleys, estuaries and wet pastures as well as on offshore islands. They are tremendously social animals and the relationships that form in a flock are both amazing and amusing to watch. Geese are primarily herbivores and usually eat plant materials, such as roots, leaves, stems, sprouts and tender grasses... like our lawns.

While geese may be enjoyable to watch, their appeal can quickly fade when a family or two take up residence on a shoreline or dock. Geese can quickly foul beaches and swimming areas and can become a big nuisance.

Our resident Canada geese can become a problem because:

- habitat and food is abundant
- geese have a high reproductive potential and a long life span
- mortality from hunting and other predation is low

Open, manicured lawns next to lakes is excellent goose habitat. The open expanse of lawns make it easier for geese



to see and avoid predators; and docks and beaches provide secure "loafing" sites for preening.

"Hazing" techniques, such as using dogs and motion-activated sprinklers, may chase geese off someone's lawn, but they often just move to a neighbor's yard and come back again when they feel it is safe. Decoys, such as coyote silhouettes or plastic swans, can provide relief but the effect is generally temporary. Similarly, fences made of reflective tape or hung with ribbons will discourage geese but they are unsightly and marginally effective. Organic-based goose repellents are somewhat effective, but must be reapplied each time the lawn is mowed and after rainfalls.

Perhaps the best long-term method to reduce geese problems on metro lakes is to landscape shorelines to make them less attractive habitat for geese and their broods. An unmowed shoreline buffer of flowering plants, low growing shrubs or native grasses at least 20-30 inches tall in a thick band along the shoreline can discourage goose visits. Geese avoid using areas where plants obstruct their view of the surrounding area.

## Will 2021 be a "Weedy" Year?

Mother Nature may throw us a curve ball, but all indications are 2021 will be a good year for weeds. Lake scientists say this season's late "ice-in" and early "ice-out" dates, low lake levels, low snowfall, and good water clarity have led to optimal conditions for weeds to grow over the winter and into spring. While it is difficult to predict what the lake will look like this summer, there is a good chance it will be much "weedier" than last year.

**MINNESOTA INBOARD**  
**ONE FAMILY. ONE BRAND. ONE MISSION.**  
 BOAT SALES • PRO SHOP • SERVICE • STORAGE • FIBERGLASS REPAIR

**MINNESOTA INBOARD**  
**WATER SPORTS**

**Malibu** BOATS

**AXIS**  
 WAKE RESEARCH

**OUR FAMILY PROUDLY SERVING MINNESOTA'S 10,000 LAKES SINCE 1992**

**EXCELSIOR SALES / 720 GALPIN LAKE ROAD EXCELSIOR, MN 55331**  
**TWIN CITIES SERVICE CENTER / 260 STATE STREET NEW GERMANY, MN 55367**  
**BAXTER SALES & SERVICE CENTER / 15779 EDGEWOOD DRIVE BAXTER, MN 56425**

**WWW.MNINBOARD.COM** @MNINBOARD @MNINBOARD /MNINBOARD



# Help Keep Starry Stonewort Out of Lake Minnetonka

Starry stonewort has never been eradicated from any U.S. lake, and once established, it can cost tens to hundreds of thousands of dollars to control it. For example, an engineering report completed for Lake Koronis, near Alexandria, MN, estimates it will cost over \$171,000 annually to control starry stonewort in the lake.



Photo: MnDNR

## If you suspect you found starry stonewort in Lake Minnetonka:

- Note the exact location
- Don't disturb the area
- Take a photo or keep the specimen
- Contact the Minnesota Department of Natural Resources AIS Specialist at: [dnr.state.mn.us/invasives/ais/contacts.html](http://dnr.state.mn.us/invasives/ais/contacts.html)

Medicine Lake in Plymouth, Lake Carnelian in Stearns County, and fourteen other Lakes in Minnesota are infested with starry stonewort. If introduced in Lake Minnetonka, starry stonewort can quickly spread throughout the lake, making boating and recreation difficult.

## The Minnesota Department of Natural Resources reminds boaters and anglers to follow Minnesota laws to prevent the spread of starry stonewort and other aquatic invasive species:

- Clean aquatic plants and animals from watercraft, trailers, and water-related equipment
- Drain all water by removing drain plugs and keep drain plugs out while transporting watercraft
- Dispose of unwanted bait in the trash

But also know that some invasive species are small and difficult to see on your boat or equipment. To remove or kill them, take one or more of the following precautions before moving to another waterbody, especially after leaving infested waters:

- Spray with high-pressure water
- Rinse with very hot water (120 degrees for at least two minutes or 140 degrees for at least 10 seconds)
- Dry for at least five days

## Pollinator Friendly Shorelands

Pollinators, such as bees and butterflies, play an essential role in food production as well as maintaining healthy ecosystems.

There are more than 450 native bee species in Minnesota, along with hundreds of species of flower-visiting butterflies, moths, beetles and native flies. Native populations of pollinators are declining.

Planting habitat for pollinators, and protecting it from pesticides is one of the easiest ways for you to help pollinators!

Shorelands are great areas for pollinator gardens, and even a small garden can provide food, water, and shelter for pollinators. While bigger may be better, plant diversity is the key for pollinator habitat. Several small gardens in a neighborhood with a variety of plants can provide good habitat.

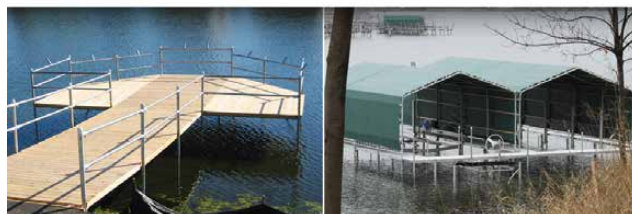
If you have a corner of your property that is too steep to mow, too wet, or just not used, consider using flowering native plants that attract butterflies and bees. Use only plants certified by a nursery as neonics or neonicotinoid free – these chemicals are toxic to pollinators.

Plant diversity and seasonal color is key to creating pollinator habitat – most major nurseries can help you select the right plants for your pollinator garden.



## TOP OF THE LINE DOCK SYSTEMS

TONKA DOCK • POLY DOCK • ALUMA DOCK  
DOCKS • BOAT HOUSES • BOAT LIFTS • RIP RAP



**FINELINE DOCKS**  
952.472.1172  
[finelinedocks.com](http://finelinedocks.com)

### REMINDER:

Use only state permitted Lake Service Providers to install your dock, maintain rip-rap, or for any work on your beach or shoreline. This will help prevent aquatic invasive species (AIS) from being introduced in front of your property. You can search for the list of companies with current permits by county at: [mndnr.gov/lsp](http://mndnr.gov/lsp).

# Lake Minnetonka Association Receives Grants from Hennepin County and the MnDNR

For the second year in a row, the Lake Minnetonka Association has been awarded grants for aquatic invasive species control and prevention from the Minnesota Department of Natural Resources (MnDNR) and Hennepin County.

The MnDNR is providing **\$16,552 to the Lake Minnetonka Association** and **\$8,000 to the St. Albans Bay and Carmans Bay Lake Improvement Districts**. Grants will be used to offset costs associated with Eurasian watermilfoil and curlyleaf pondweed control in bays that are part of the Lake Minnetonka Association's Bay Treatment Program or are being treated by a Lake Improvement District.

Hennepin County awarded a \$5,000 grant to the Lake Minnetonka Association to continue it's Starry Stonewort Prevention

Program. Sixteen of the most active public and private access sites will be monitored on Lake Minnetonka. Each site will be surveyed twice during optimum growing time for starry stonewort using methodology developed by the University of Minnesota. Additionally, plant specialists will be monitoring over

1,700 additional locations on the lake throughout the season, making Lake Minnetonka one of the most carefully monitored lakes in Minnesota. If starry stonewort is found early enough, it is easier to prevent it from spreading lake wide and into other lakes throughout the state.



## Rockvram Boat Yards, Inc.



Download your **FREE** guide at  
[LakeMinnetonkaFun.com](http://LakeMinnetonkaFun.com)

**Boat Club**

**Toon Club**

**Free Fun Guide!**

952.471.9515

www.rockvamboatyards.com

[www.Facebook.com/RockvamBoatYards](http://www.Facebook.com/RockvamBoatYards)



Visit [RockvamBoatClub.com](http://RockvamBoatClub.com) for our last minute special!

- ◆ One flat fee for boat club membership
- ◆ Unlimited use 5/27 thru 9/6, 2021
- ◆ Great ratio of boats to members
- ◆ Central location on Lake Minnetonka
- ◆ Lots of convenient parking



# Bay Treatment Program Update and Treatment Notice

The Lake Minnetonka Association will treat curlyleaf pondweed and Eurasian watermilfoil, both aquatic invasive species, on the following bays in Lake Minnetonka: Grays Bay, Gideons Bay, Crystal Bay, Phelps Bay, North Arm Bay, Carsons Bay and St. Louis Bay.

EPA/MnDNR approved herbicides will be applied in selected areas of each bay at no more than recommended application rates during May-September, 2021.

If a landowner does NOT want treatment to occur adjacent to their property, they must complete the waiver located at [LMAssociation.org](http://LMAssociation.org) or contact the Lake Minnetonka Association at 952-470-4449.

Curlyleaf pondweed surveys begin in May and treatments will shortly follow. Eurasian watermilfoil surveys will be done in June with the goal that treatments will be completed before July fourth.

BAY	WEEDS TREATED	ACRES TREATED
Carmans*	Eurasian watermilfoil	25
	Curlyleaf pondweed	30
Carsons and St. Louis	Eurasian watermilfoil	20
	Curlyleaf pondweed	25
Crystal	Eurasian watermilfoil	20
	Curlyleaf pondweed	25
Gideons	Eurasian watermilfoil	25
	Curlyleaf pondweed	25
Grays	Eurasian watermilfoil	25
	Curlyleaf pondweed	25
North Arm	Eurasian watermilfoil	10
	Curlyleaf pondweed	50
Phelps	Eurasian watermilfoil	25
	Curlyleaf pondweed	0
St. Albans*	Eurasian watermilfoil	25
	Curlyleaf pondweed	20

\*Treatment is part of a Lake Improvement District

**Invasive Flowering Rush Control Update** – Treatments are expected to be done in late June/early July. The Lake Minnetonka Association thanks its members, Tonka Bay Marina, and Northshore Marina for their generous contributions to this program.

## From the Sheriff's Office

Spring time is such a great time of year but it also is a great time to remember boating safety.

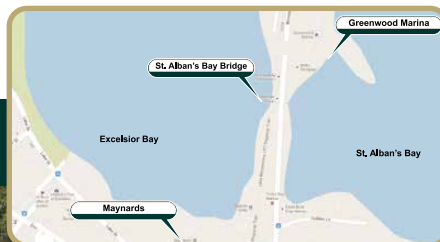


- The water this time of year is very cold. **Wear a personal flotation device (PFD)**—even great swimmers can quickly become hypothermic and will be unable to stay afloat.
- Have a **sober driver** at all times. In 30 percent of fatal boat accidents, alcohol is a factor.
- **Let someone know your plans** and when you will be back.
- Pay attention to the **weather**, it takes time to get off the water.
- **Check your boat** prior to launching. Things to consider: Do you have all your PFDs, fire extinguisher, audible device, phone or marine radio, carbon monoxide detection (if applicable), do your navigation lights work? For inboard boats, **run your blowers** for at least five minutes prior to starting the engines.



*Voted Best Marina 4 Years & Running*

21945 Minnetonka Blvd.  
Excelsior, MN 55331



**SAVE ON GAS!**  
Join Our  
**Loyalty Program!**

*Contact us or stop in for details*

## Services

- Covered boat slips
- Winter storage/services
- Full service gas dock located in quiet waters of *St. Alban's Bay*
- Snacks and boat supplies
- Cleaning and detailing services

**952-474-7942**  
[www.greenwoodmarina.com](http://www.greenwoodmarina.com)





# YOUR LOCAL BOATING RESOURCE



141 Minnetonka Blvd. | Excelsior, MN 55331 | (888) 960-1301 | [marinemax.com/excelsior](http://marinemax.com/excelsior)



CRUISERS YACHTS



AVIARA

HARRIS

## Support Our Business Members

- ◆ Al & Alma's Supper Club
- ◆ Back Channel Brewing Co.
- ◆ Blue Lagoon Marine, Inc.
- ◆ Caribbean Marina
- ◆ Carisch, Inc.
- ◆ The Danberry Company
- ◆ Dock & Lift Inc.
- ◆ Don Stodola Well Drilling Co.
- ◆ Excelsior Brewing Company
- ◆ FineLine Lakeshore Service
- ◆ Greenwood Marina
- ◆ Howard's Point Marina
- ◆ Kowalski's Market
- ◆ Lafayette Club
- ◆ Life's a Beach Shoreline Services
- ◆ Lindbo Landing Marina
- ◆ Lord Fletcher's Old Lake Lodge
- ◆ MarineMax Minnesota
- ◆ Maynards
- ◆ MDS Remodeling, LLC
- ◆ Minnetonka Bargeman
- ◆ MN Inboard Water Sports
- ◆ Museum of Lake Minnetonka
- ◆ Navarre True Value Hardware
- ◆ Niccum Docks, Inc.
- ◆ North Shore Marina
- ◆ Otten Bros. Garden Center & Landscaping
- ◆ Paradise Charter Cruises
- ◆ PLM Lake & Land Management, Corp.
- ◆ Rockvam Boat Yards
- ◆ RSI Marine
- ◆ Candi & Scott Stabeck - Edina Realty, Wayzata/Lake Minnetonka
- ◆ Tonka Bay Marina, Inc.
- ◆ Wave Armor

**We thank our Business Members for their many contributions to our organization and to our Lake Minnetonka community. You make the lake a better place to live, work and play!**

## PLEASE JOIN OR RENEW YOUR MEMBERSHIP TODAY!

### MEMBERSHIP FORM

*Please complete this form and mail it with your tax-deductible contribution to:  
The Lake Minnetonka Association, P.O. Box 248, Excelsior, MN 55331*

Make checks payable to "The Lake Minnetonka Association" or contribute online: [www.LMAssociation.org](http://www.LMAssociation.org)

**I want to support the Lake Minnetonka Association at the following membership level:**

Basic \$50 - \$199    Sustaining \$200 - \$499    Captain \$500 - \$999    Commodore \$1000+    Business \$350

Other or additional contribution..... \$ \_\_\_\_\_

**TOTAL** ..... \$ \_\_\_\_\_

Name(s): \_\_\_\_\_

Address: \_\_\_\_\_ Phone: \_\_\_\_\_

City, State, Zip: \_\_\_\_\_ E-mail: \_\_\_\_\_

**CONTRIBUTIONS ARE TAX-DEDUCTIBLE.**

The Lake Minnetonka Association is a 501(c)(3) nonprofit corporation

**Please send me information** on how I can help to get my bay to join the **Lake Minnetonka Association's Bay Treatment Program** to control Eurasian watermilfoil and curlyleaf pondweed in my bay.



**INSIDE THIS ISSUE:**

*More People are Discovering the Fun of Boating* ..... page 1

*From the Helm: Help to Keep Lake Minnetonka Weed Free*..... page 2

*Minnesota's 21-Day Dry Law* ..... page 2

*Duck, Duck... GOOSE*..... page 3

*Will 2021 be a "Weedy" Year?* ..... page 3

*Help Keep Starry Stonewort Out of Lake Minnetonka* ..... page 4

*Pollinator Friendly Shorelands* ..... page 4

*REMINDER: Use only state permitted Lake Service Providers* ..... page 4

*Grants from Hennepin County and the MnDNR* ..... page 5

*Bay Treatment Program Update*..... page 6

*From the Sheriff's Office*..... page 6



**LAKE**  
**MINNETONKA**  
**ASSOCIATION**

P.O. Box 248  
Excelsior, MN 55331

*The VOICE for Lake Minnetonka lakeshore owners and businesses!*



**Al & Alma's**  
SUPPER CLUB & CHARTER CRUISES  
SINCE 1956

**MAKE YOUR RESERVATIONS TODAY!**  
**952-472-3098**  
**AL-ALMAS.COM**







*Come*  
**EAT. PLAY. RELAX.**  
*with us!*





